

TDG-SHAKETABLE ATOM

DESKTOP SERVO ELECTRO MECHANICAL SHAKE TABLE

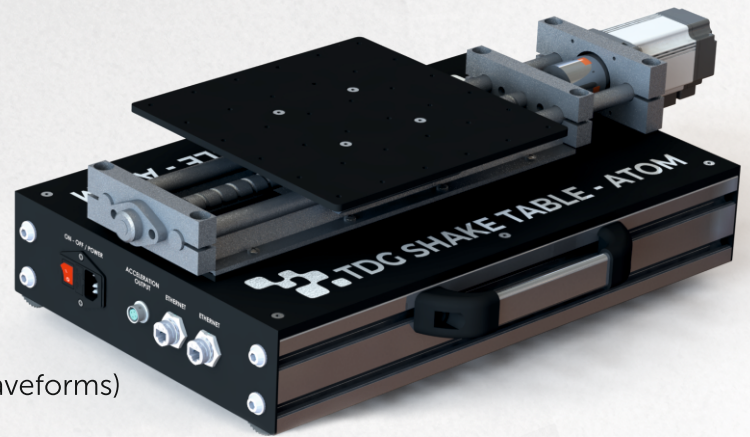
FEATURES

- Highest Control Resolution with Servo Motor
- Closed-Loop PID Control
- Up to 50 kgf payload (@ ± 1 g)
- 250 X 250 mm Table Size
- Up to 5g
- ± 125 mm Stroke
- Operational Frequency up to 30 Hz
- High precision linear guideway with low friction.
- Earthquake Simulation (Arbitrary User-Defined Waveforms)
- Standard Waveforms - Sine, Triangle, Etc
- Easy Setup, Plug & Play
- Power Supply: 1 Phase, 220 V AC, 50 Hz
- Nominal Power Consumption: Approx. 0.9 kVA
- Recommended Circuit Breaker Rating: 10 A
- High Industrial Quality, Virtually Maintenance Free

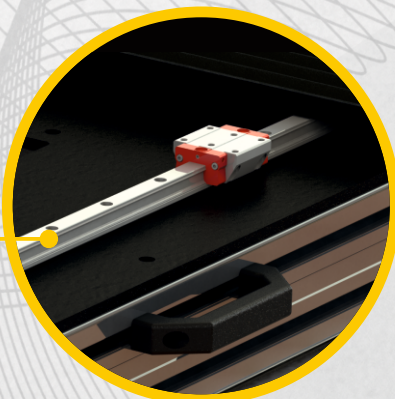
TDG SHAKE TABLE ATOM is a mobile size shake table. It can simulate earthquakes using real records as well as operate waveforms such as sine, triangle, etc., and any user-defined acceleration or displacement profile. The system is fully controlled via computer software. It's commonly used in Civil Engineering departments. It can also be used for structural mechanics, earthquake, soil, and geological engineering tests and calibrating accelerometers and seismic instruments.

The product has become the market choice in the last decade, due to its price advantage, flexibility, and practical use. It's actively being used in many university laboratories in Turkey and several countries all over the world, such as the USA, Canada, Spain, Netherlands, India, Taiwan, Thailand, China & Australia, South America.

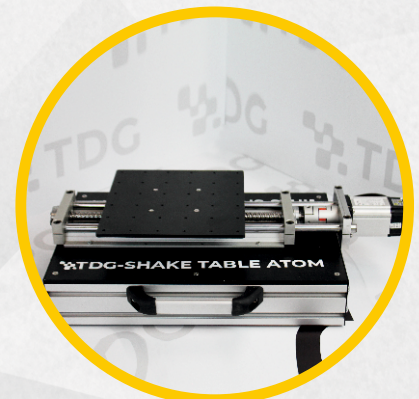
"Compact, powerful, precise"



"DEVELOPED 100% IN TDG LABORATORIES & PATENTED"

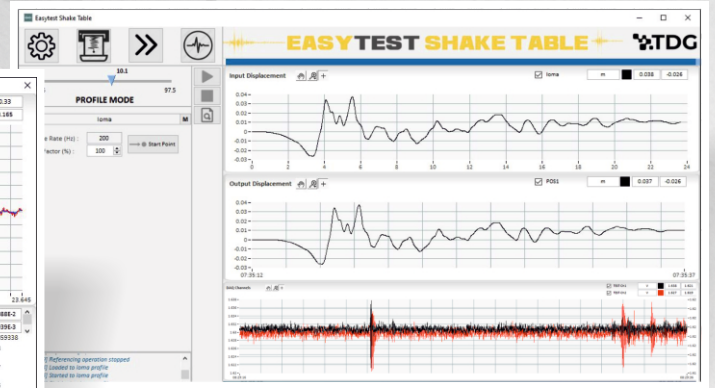
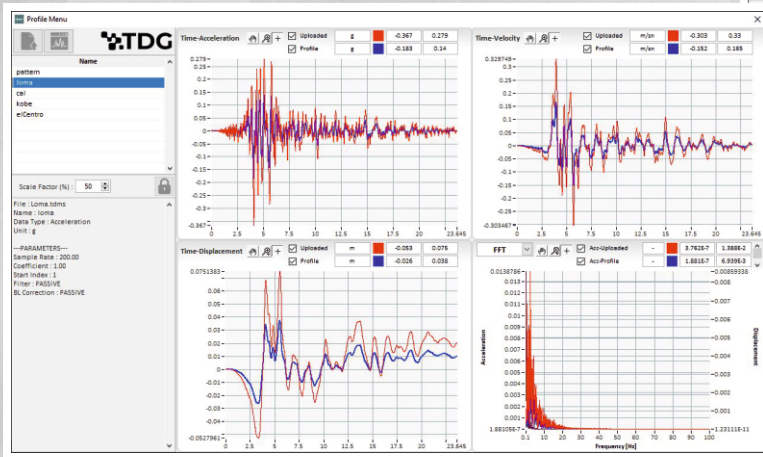


**SUPER LOW-FRICTION
PRECISION LINEAR GUIDES**



EASYTEST SHAKE TABLE

- USER-FRIENDLY CONTROL SOFTWARE
- UPLOADING EARTHQUAKE DATA
- AUTOMATED DATA LOGGING



- INTEGRATED DAQ DEVICE
- REAL-TIME DATA MONITORING
- ANALYZING RECORDED DATA

- COMPACT ERGONOMIC DESIGN
- INTEGRATED LIMIT SWITCH FOR INCREASED SAFETY
- AUTOMATIC CENTERING / HOME POSITIONING

Mounting Holes Grid for Models & Structures

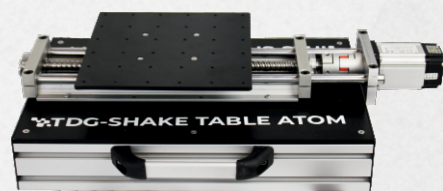
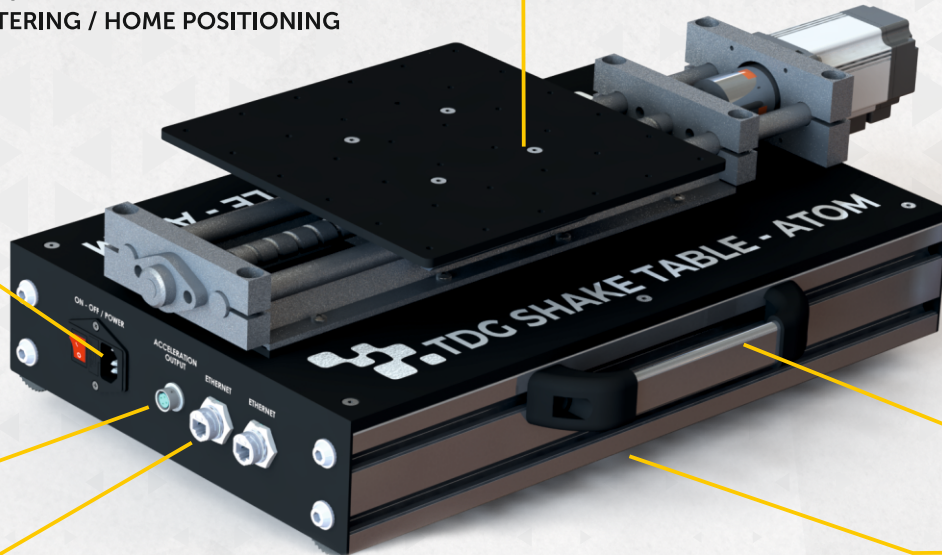
Power Switch

Accelerometer Output

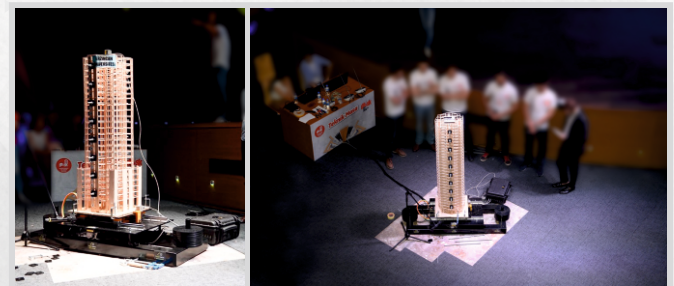
Ethernet Connection

Handhold

Anti-slip Base



Integrated Data Logging System for Laboratory



CHOICE OF DASK (NATURAL DISASTER INSURANCE INSTITUTE) SINCE 2014

TDG-SHAKETABLE is used as the earthquake simulator, together with TESTBOX2010 digitizer, SENSEBOX7001 accelerometer in "Earthquake Resistant Building Design Competition" organized by \ DASK, since it was first arranged at year 2014.

" Check out the video"



Teknik Destek Grubu Bilimsel Ölçme Ltd. Şti.

ODTÜ Teknokent Bilişim İnovasyon Merkezi
Mustafa Kemal Mah. Dumlupınar Bul. 280G B-Blok
D:214 Çankaya/Ankara /TURKEY
P : +90 312 473 97 91-92
info@tdg.com.tr
www.tdg.com.tr